

Parts List for Size 5.5 CB Clutch-Brakes

Serial and model numbers from nameplate are required when ordering replacement parts.

See reverse side for Tor-ac model.

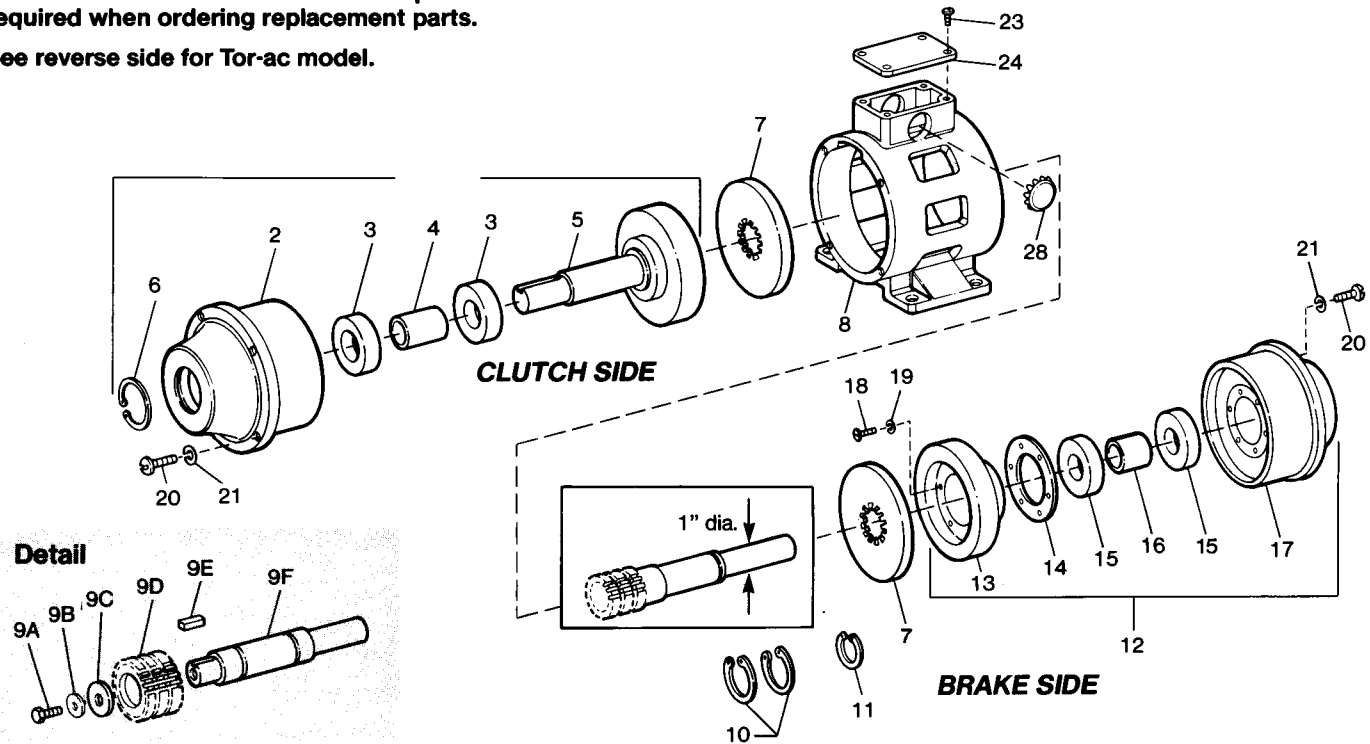


TABLE A

Item No.	Description	Part Number	Qty.
1	Clutch assembly (includes items 2 through 6) 90-100 volts, DC 24-28 volts, DC 12 volts, DC 6 volts, DC	5-40-0055-00-01J 5-40-0055-00-01E 5-40-0055-00-01C 5-40-0055-00-01B	1 1 1 1
2	Magnet body and coil assembly - clutch 90-100 volts, DC 24-28 volts, DC 12 volts, DC 6 volts, DC	5-04-0055-02-01J 5-04-0055-02-01E 5-04-0055-02-01C 5-04-0055-02-01B	1 1 1 1
3	Ball bearing	9-01-0016-00	2
4	Spacer, bearing	8-455-039-00	1
5	Drivehub (1" diameter)	5-30-0505-00	1
6	Retaining ring	9-03-0005-00	1
7	Armature	8-405-023-07	2
8	Housing	8-443-008-01	1
9A	Screw	9-16-3010-00	1
9B	Belleville washer	9-71-2081-01	1
9C	Belleville washer	9-71-2121-00	1
9D	Hub	8-411-055-01	1
9E	Key	9-50-1012-00	1
9F	Shaft - brake (1" diameter)	8-464-055-00	1
10	Retaining ring	9-03-0014-00	2
11	Retaining ring	9-03-0005-00	1
12	Brake assembly (includes items 13 through 19) 90-100 volts, DC 24-28 volts, DC 12 volts, DC 6 volts, DC	5-40-5055-00-01J 5-40-5055-00-01E 5-40-5055-00-01C 5-40-5055-00-01B	1 1 1 1
13	Friction face assembly	5-30-0506-00	1
14	Spacer	8-455-040-01	1

TABLE A (continued)

Item No.	Description	Part Number	Qty.
15	Ball bearing	9-01-0016-00	2
16	Spacer, bearing	8-455-039-00	1
17	Magnet body and coil assembly - brake 90-100 volts, DC 24-28 volts, DC 12 volts, DC 6 volts, DC	5-04-0055-03-01J 5-04-0055-03-01E 5-04-0055-03-01C 5-04-0055-03-01B	1 1 1 1
18	Flat head screw	9-11-4610-00	8
19	Lock washer	9-45-0726-00	8
20	Round head screw	9-10-3012-00	8
21	Lock washer	9-45-0330-00	8
23	Self tapping screw	9-25-7309-00	4
24	Nameplate	—	1
28	Snap-in blank	9-61-1150-00	1
not shown	Installation and Service Instruction Sheet (CB)	8-078-800-05	1

TABLE B

For spring release use:		
Release spring	8-404-829-01	2 required
Screw	9-16-2705-00	6 required
Lock washer	9-45-0327-00	6 required

TABLE C

For case hardened armature use in place of item 7:		
Armature	8-405-023-14	2 required

Parts List for Size 5.5 CB Tor-ac® Clutch-Brakes

Serial and model numbers from nameplate are required when ordering replacement parts.

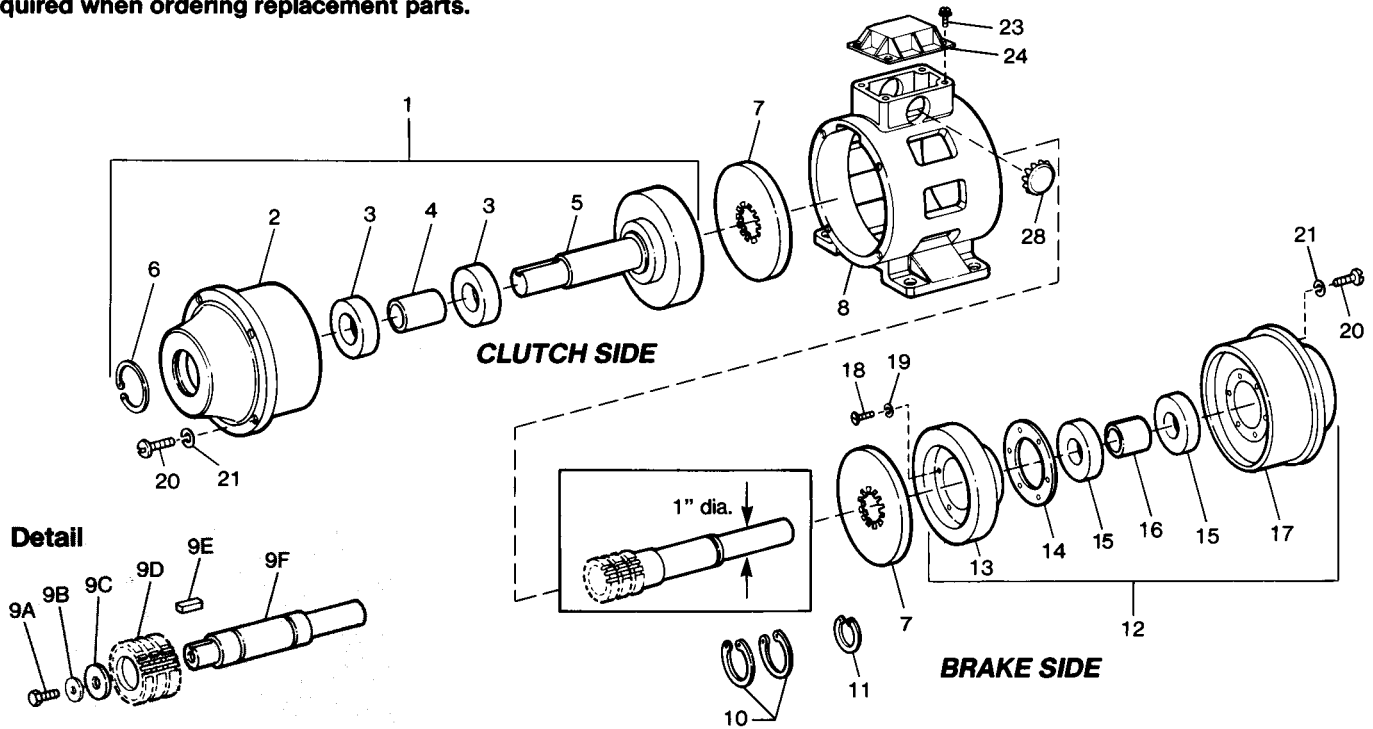


TABLE A

Item No.	Description	Part Number	Qty.
1	Clutch assembly (includes items 2 through 6) 90-100 volts, DC	5-40-0055-00-01J	1
2	Magnet body and coil assembly - clutch 90-100 volts, DC	5-04-0055-02-01J	1
3	Ball bearing	9-01-0016-00	2
4	Spacer, bearing	8-455-039-00	1
5	Drivehub (1" diameter)	5-30-0505-00	1
6	Retaining ring	9-03-0005-00	1
7	Armature	8-405-023-07	2
8	Housing	8-443-008-01	1
9A	Screw	9-16-3010-00	1
9B	Belleville washer	9-71-2081-01	1
9C	Belleville washer	9-71-2121-00	1
9D	Hub	8-411-055-01	1
9E	Key	9-50-1012-00	1
9F	Shaft - brake (1" diameter)	8-464-055-00	1
10	Retaining ring	9-03-0014-00	2
11	Retaining ring	9-03-0005-00	1
12	Brake assembly (includes items 13 through 19) 90-100 volts, DC	5-40-5055-00-01J	1
13	Friction face assembly	5-30-0506-00	1
14	Spacer	8-455-040-01	1
15	Ball bearing	9-01-0016-00	2
16	Spacer, bearing	8-455-039-00	1
17	Magnet body and coil assembly - brake 90-100 volts, DC	5-04-0055-03-01J	1

TABLE A (continued)

Item No.	Description	Part Number	Qty.
18	Flat head screw	9-11-4610-00	8
19	Lock washer	9-45-0726-00	8
20	Round head screw	9-10-3012-00	8
21	Lock washer	9-45-0330-00	8
23	Self tapping screw	9-25-7309-00	4
24	Tor-ac power supply (115 VAC input)	4-1-20190-00	1
28	Snap-in blank	9-61-1150-00	1
<i>not shown</i>	Installation and Service Instruction Sheet (Tor-ac CB)	8-078-857-00	1
<i>not shown</i>	Tor-ac Instruction Tag	8-078-861-00	1

TABLE B

For spring release use:		
Release spring	8-404-829-01	2 required
Screw	9-16-2705-00	6 required
Lock washer	9-45-0327-00	6 required

TABLE C

For case hardened armature use in place of item 7:		
Armature	8-405-023-14	2 required