

## Parts List for Size 3 CB Clutch-Brakes

Serial and model numbers from nameplate are required when ordering replacement parts.

See reverse side for Tor-ac model.

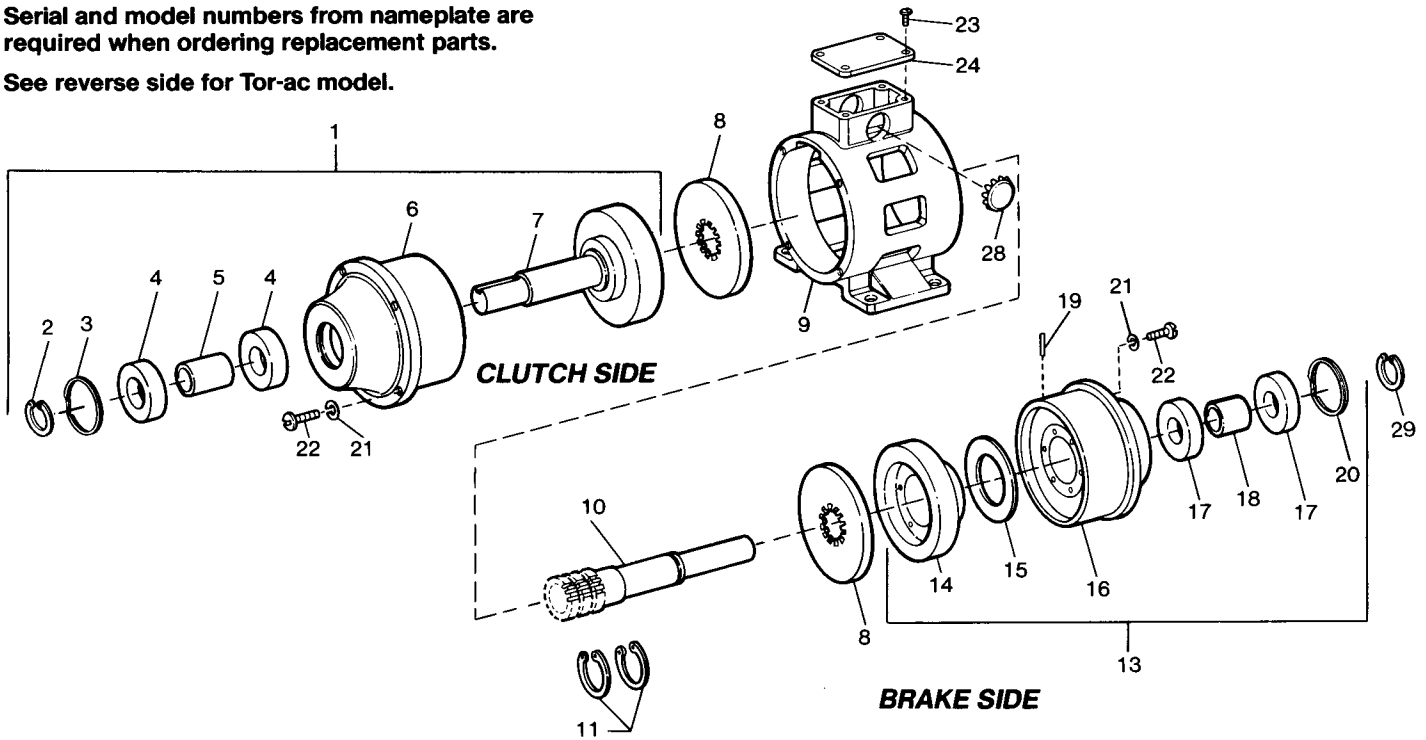


TABLE A

Item No.	Description	Part Number	No. Req.
1	Clutch assembly (includes items 2 through 7) 90-100 volts, DC 24-28 volts, DC 12 volts, DC 6 volts, DC	5-40-0030-00-01J 5-40-0030-00-01E 5-40-0030-00-01C 5-40-0030-00-01B	1 1 1 1
2	Retaining ring	9-03-0026-00	1
3	Retaining ring	9-03-0079-00	1
4	Ball bearing	9-01-0022-00	2
5	Spacer, bearing	8-455-115-00	1
6	Magnet body and coil assembly 90-100 volts, DC 24-28 volts, DC 12 volts, DC 6 volts, DC	5-04-0030-02-01J 5-04-0030-02-01E 5-04-0030-02-01C 5-04-0030-02-01B	1 1 1 1
7	Drivehub	5-30-0223-02	1
8	Armature	8-405-578-00	2
9	Housing	8-443-006-01	1
10	Brake shaft	8-464-008-04	1
11	Retaining ring	9-03-0002-00	2
13	Brake assembly (includes items 14 through 20) 90-100 volts, DC 24-28 volts, DC 12 volts, DC 6 volts, DC	5-40-5030-01-01J 5-40-5030-01-01E 5-40-5030-01-01C 5-40-5030-01-01B	1 1 1 1
14	Friction face assembly	5-30-0224-02	1
15	Spacer	8-455-109-01	1
16	Magnet body and coil assembly 90-100 volts, DC 24-28 volts, DC 12 volts, DC 6 volts, DC	5-04-0030-02-01J 5-04-0030-02-01E 5-04-0030-02-01C 5-04-0030-02-01B	1 1 1 1

TABLE A (continued)

Item No.	Description	Part Number	No. Req.
17	Ball bearing	9-01-0022-00	2
18	Spacer, bearing	8-455-115-00	1
19	Spirol pin	9-32-2020-00	4
20	Retaining ring	9-03-0079-00	1
21	Lock washer	9-45-0326-00	8
22	Round head screw	9-10-2608-00	8
23	Self tapping screw	9-25-7309-00	4
24	Nameplate	—	1
28	Snap-in blank	9-61-1150-00	1
29	Retaining ring	9-03-0026-00	1
not shown	Installation and Service Instruction Sheet (CB)	8-078-800-05	1.

TABLE B

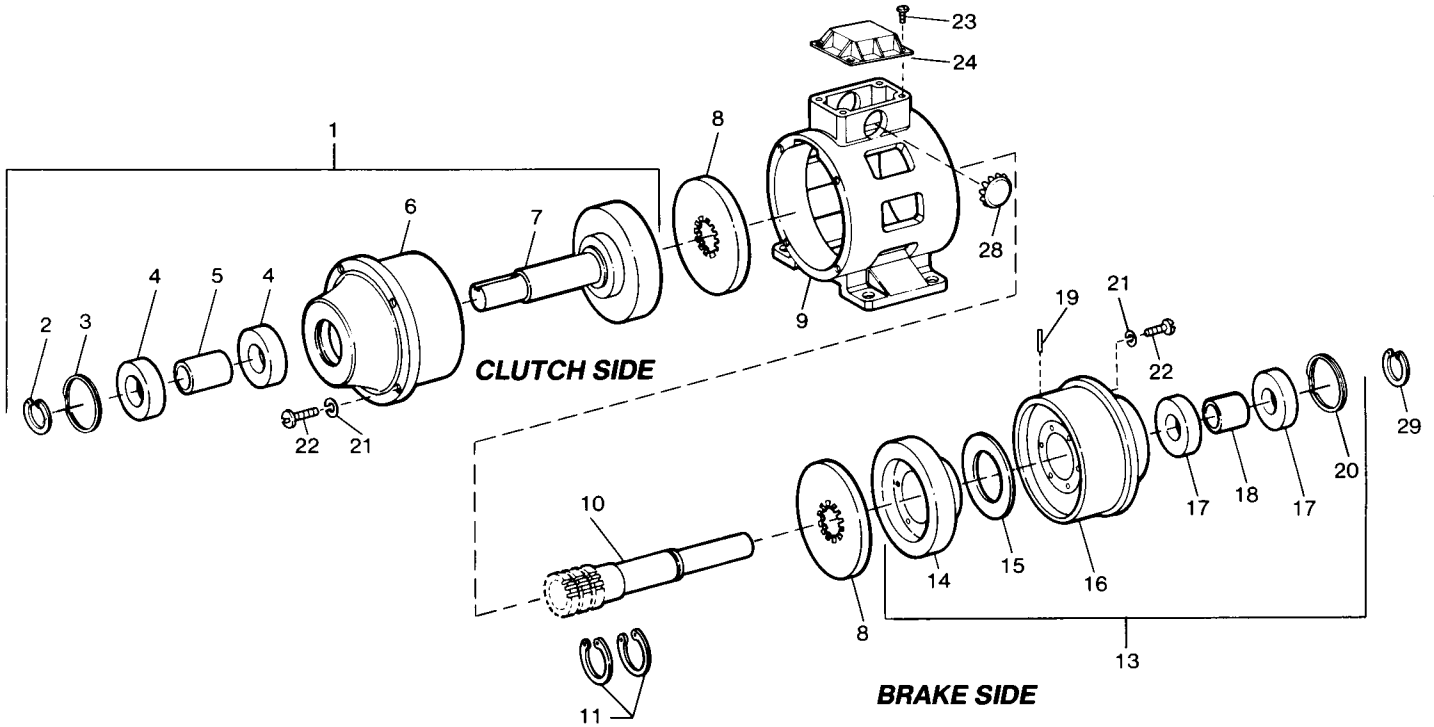
For spring release use:		
Release spring	8-404-803-02	2 required
Screw	9-15-9999-00	6 required
Lock washer	9-45-0327-00	6 required

TABLE C

For case hardened armature use in place of item 8:		
Armature	8-405-578-01	2 required

# Parts List for Size 3 CB Tor-ac® Clutch-Brakes

Serial and model numbers from nameplate are required when ordering replacement parts.



**TABLE A**

Item No.	Description	Part Number	No. Req.
1	Clutch assembly (includes items 2 through 7) 90-100 volts, DC	5-40-0030-00-01J	1
2	Retaining ring	9-03-0026-00	1
3	Retaining ring	9-03-0079-00	1
4	Ball bearing	9-01-0022-00	2
5	Spacer, bearing	8-455-115-00	1
6	Magnet body and coil assembly 90-100 volts, DC	5-04-0030-02-01J	1
7	Drivehub	5-30-0223-02	1
8	Armature	8-405-578-00	2
9	Housing	8-443-006-01	1
10	Brake shaft	8-464-008-04	1
11	Retaining ring	9-03-0002-00	2
13	Brake assembly (includes items 14 through 20) 90-100 volts, DC	5-40-5030-01-01J	1
14	Friction face assembly	5-30-0224-02	1
15	Spacer	8-455-109-01	1
16	Magnet body and coil assembly 90-100 volts, DC	5-04-0030-02-01J	1
17	Ball bearing	9-01-0022-00	2
18	Spacer, bearing	8-455-115-00	1
19	Spirol pin	9-32-2020-00	4
20	Retaining ring	9-03-0079-00	1

**TABLE A (continued)**

Item No.	Description	Part Number	No. Req.
21	Lock washer	9-45-0326-00	8
22	Round head screw	9-10-2608-00	8
23	Self tapping screw	9-25-7309-00	4
24	Tor-ac power supply (115 VAC input)	4-1-20190-00	1
28	Snap-in blank	9-61-1150-00	1
29	Retaining ring	9-03-0026-00	1
not shown	Installation and Service Instruction Sheet (CB)	8-078-800-05	1
not shown	Tor-ac Instruction Tag	8-078-861-00	1

**TABLE B**

For spring release use:		
Release spring	8-404-803-02	2 required
Screw	9-15-9999-00	6 required
Lock washer	9-45-0327-00	6 required

**TABLE C**

For case hardened armature use in place of item 8:		
Armature	8-405-578-01	2 required