

Parts List for 65,300-07 and 65,300-09 Series Brakes

Information required when ordering replacement parts:

- When ordering brake parts, give part number of parts or kits needed, brake model number, and brake serial number. The brake model and serial number may identify special brakes not covered by this parts list.
- When ordering hubs, specify shaft diameter (hub bore) and keyway.
- For installation and service instructions, see P/N 8-078-925-09. Detailed service instruction sheet is included with each kit.

Note:

- This brake series is listed by UL (Underwriters Laboratories) for use in certain locations classified as hazardous. Installation and servicing

must be in compliance with all existing local safety codes. All wiring and electrical connections must comply with the National Electric Code (NEC) and local electrical codes in effect at the time. For additional information see the Underwriters Laboratories (UL) website <http://www.ul.com/hazloc/codes/html>.

- HazLoc inspection authorities are responsible for verifying and authorizing the use of suitably designed, manufactured and installed HazLoc equipment. When questions arise always consult the local **Authority Having Jurisdiction (AHJ)** for directions and approvals.

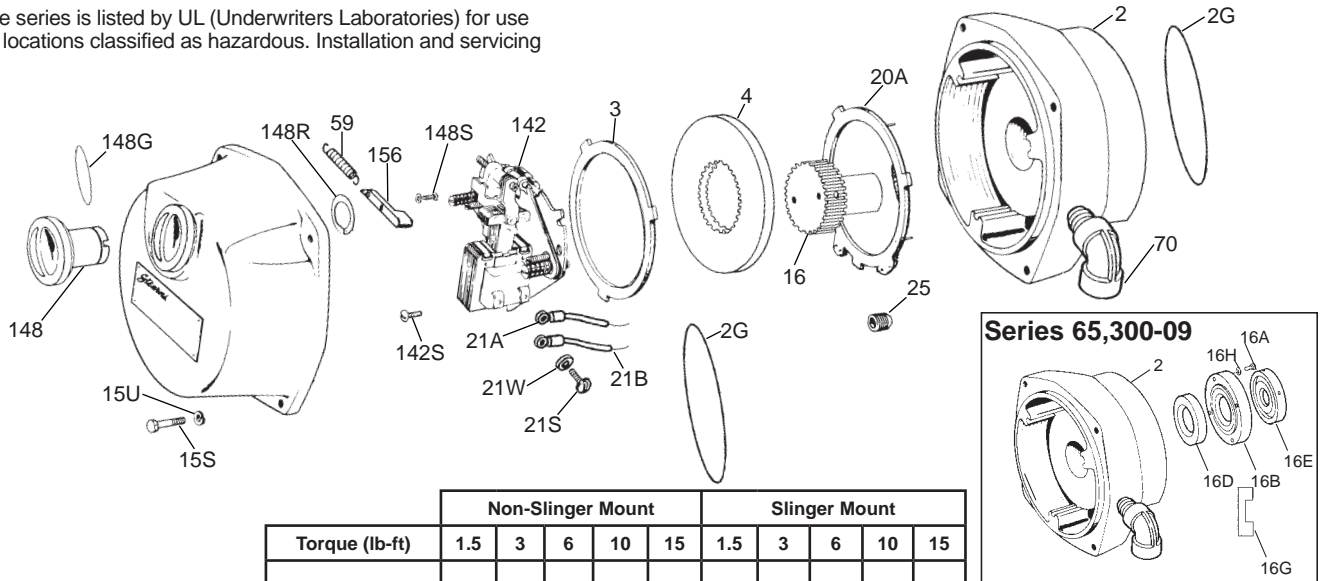


TABLE 1

| Item | Description | Part Number↓ | Non-Slinger Mount | | | | | Slinger Mount | | | | | |
|-----------|------------------------------------|--|-------------------|-----|---|---|----|---------------|-----|---|---|----|----|
| | | | Torque (lb-ft) | 1.5 | 3 | 6 | 10 | 15 | 1.5 | 3 | 6 | 10 | 15 |
| 2 | Endplate assembly | 5-50-5205-00 | 1 | 1 | 1 | 1 | 1 | 1 | 1 | 1 | 1 | 1 | 1 |
| 16 | Hub | 5-16-5015-00 | 1 | 1 | 1 | 1 | 1 | 1 | 1 | 1 | 1 | 1 | 1 |
| 16A | 1/4-20 x 5/8 cap screw | 9-17-1010-00 | | | | | | 4 | 4 | 4 | 4 | 4 | 4 |
| 16B | Bearing cover | 8-103-504-00 | | | | | | 1 | 1 | 1 | 1 | 1 | 1 |
| 16H | 1/4" washer | 9-45-1330-00 | | | | | | 4 | 4 | 4 | 4 | 4 | 4 |
| 16D | Bearing | 9-01-6506-00 | | | | | | 1 | 1 | 1 | 1 | 1 | 1 |
| 16E | Slinger | 8-103-503-00* | | | | | | 1 | 1 | 1 | 1 | 1 | 1 |
| 16G | Slinger template | 8-141-506-00 | | | | | | 1 | 1 | 1 | 1 | 1 | 1 |
| 3 | Stationary disc kit | 5-66-8354-00 | 1 | 1 | 1 | 1 | 1 | 1 | 1 | 1 | 1 | 1 | 1 |
| 3A | | 5-66-8355-00 | | | | | | | | | | | |
| 4 | Friction disc kit | 5-66-8458-00 | 1 | 1 | 1 | 2 | 2 | 1 | 1 | 1 | 2 | 2 | 2 |
| 7 | Housing assembly | 5-07-5015-00 | 1 | 1 | 1 | 1 | 1 | 1 | 1 | 1 | 1 | 1 | 1 |
| 148 | Release knob (part of #7) | 8-148-504-04 | 1 | 1 | 1 | 1 | 1 | 1 | 1 | 1 | 1 | 1 | 1 |
| 148G | Release knob O-ring | 8-073-002-12 | 1 | 1 | 1 | 1 | 1 | 1 | 1 | 1 | 1 | 1 | 1 |
| 15S | Capscrew 3/8" x 16 | 9-17-3220-00 | 4 | 4 | 4 | 4 | 4 | 4 | 4 | 4 | 4 | 4 | 4 |
| 156 | Washer 3/8" | 9-45-1332-00 | 4 | 4 | 4 | 4 | 4 | 4 | 4 | 4 | 4 | 4 | 4 |
| 20A | Insulator disc (part of #2) | 8-003-504-01 | 1 | 1 | 1 | 1 | 1 | 1 | 1 | 1 | 1 | 1 | 1 |
| 20P | Spirol pin | 9-32-2003-00 | 3 | 3 | 3 | 3 | 3 | 3 | 3 | 3 | 3 | 3 | 3 |
| 21A | Thermostat N.C. (red leads) | 5-57-5001-00 | 1 | 1 | 1 | 1 | 1 | 1 | 1 | 1 | 1 | 1 | 1 |
| 21B | Thermostat N.O. (yellow leads) | 5-57-5002-00 | 1 | 1 | 1 | 1 | 1 | 1 | 1 | 1 | 1 | 1 | 1 |
| 21S | Machine screw 5-40 x 1/4 | 9-13-3083-00 | 4 | 4 | 4 | 4 | 4 | 4 | 4 | 4 | 4 | 4 | 4 |
| 21W | Lockwasher #5 | 9-45-0325-00 | 4 | 4 | 4 | 4 | 4 | 4 | 4 | 4 | 4 | 4 | 4 |
| 25 | Set screw 3/4 x 16 | 9-23-0023-00 | 4 | 4 | 4 | 4 | 4 | 4 | 4 | 4 | 4 | 4 | 4 |
| 70 | Elbow | 9-33-3004-00 | 1 | 1 | 1 | 1 | 1 | 1 | 1 | 1 | 1 | 1 | 1 |
| 142 | Support plate assembly (less coil) | 5-42-5632-00-14 5-42-5633-00-14 5-42-5634-00-14 5-42-5635-00-14 | 1 | 1 | 1 | 1 | 1 | 1 | 1 | 1 | 1 | 1 | 1 |
| 142S | Threading screw | 9-25-9013-00 | 3 | 3 | 3 | 3 | 3 | 3 | 3 | 3 | 3 | 3 | 3 |
| 59 | Release spring | 9-71-0005-00 | 1 | 1 | 1 | 1 | 1 | 1 | 1 | 1 | 1 | 1 | 1 |
| 156 | Release arm | 8-156-510-00 | 1 | 1 | 1 | 1 | 1 | 1 | 1 | 1 | 1 | 1 | 1 |
| 148 | Release knob | 8-148-504-04 | 1 | 1 | 1 | 1 | 1 | 1 | 1 | 1 | 1 | 1 | 1 |
| 148R | Retaining ring | 9-03-0001-00 | 1 | 1 | 1 | 1 | 1 | 1 | 1 | 1 | 1 | 1 | 1 |
| 148S | Machine screw | 9-10-2706-00 | 1 | 1 | 1 | 1 | 1 | 1 | 1 | 1 | 1 | 1 | 1 |
| NOT SHOWN | Vertical spring kit | 5-63-0539-00 | | | | | | | | | 1 | 1 | 1 |
| 2G | O-Ring kit (NEMA 4) | 5-63-0540-00 | 1 | 1 | 1 | 1 | 1 | 1 | 1 | 1 | 1 | 1 | 1 |
| | O-Ring kit (NEMA 2) | 5-63-0541-00 | 1 | 1 | 1 | 1 | 1 | 1 | 1 | 1 | 1 | 1 | 1 |

* Motor shaft diameter is required to select proper slinger size.

** X = 1 is a NEMA 2 Enclosure
X = 2 is a NEMA 4 Enclosure

Support Plate Assembly

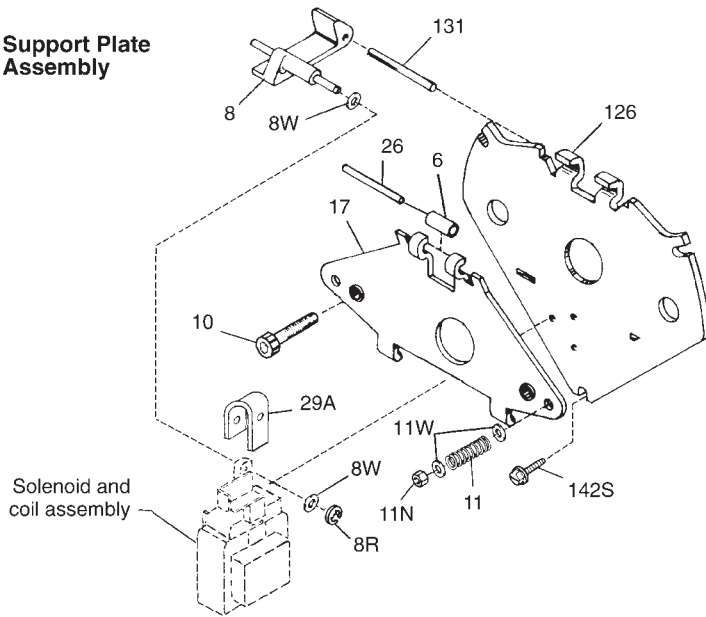


TABLE 2
Components of Support Plate and Coil Assembly

| Item | Description | Part Number↓ | Torque (lb-ft) | | | |
|------|--|--|---------------------|---------------------|---------------------|---|
| | | | 1.5 & 3 | 6 & 10 | 15 | |
| | | Support Plate Assy. (Items M through Y and EA)→ | 5-42-5574-00 | 5-42-5575-00 | 5-42-5576-00 | |
| 6 | Bearing | 8-006-501-00 | 1 | 1 | 1 | |
| 8 | Solenoid lever | 8-008-504-01 | 1 | 1 | 1 | |
| 8R | Retaining ring | 9-03-0057-00 | 1 | 1 | 1 | |
| 8W | Spacer | 9-45-0168-00 | 2 | 2 | 2 | |
| 11N | Torque adjustment nut | 9-40-3928-00 | 2 | 2 | 2 | |
| 10 | Wear adjustment screw | 9-17-8420-00 | 2 | 2 | 2 | |
| 11 | Pressure spring | 9-70-1215-00 | 2 | | | |
| | Pressure spring | 9-70-1523-00 | | 2 | | |
| | Pressure spring | 9-70-1524-00 | | | 2 | |
| 11W | Spring washer | 9-46-0010-00 | | 4 | 4 | |
| 17 | Lever arm and stop nut assembly | 5-17-5011-00 | 1 | 1 | 1 | |
| 26 | Bearing pin | 9-29-4826-00 | 1 | 1 | 1 | |
| 29A | Plunger stop | 8-094-503-00 | 1 | 1 | 1 | |
| 126 | Support plate and spring stud assembly | 5-26-5021-00 | 1 | 1 | 1 | |
| 131 | Pivot pin | 9-29-4836-00 | 1 | 1 | 1 | |
| 142S | Mounting screws | 9-25-9013-00 | 3 | 3 | 3 | |
| Z | No. 4 solenoid kit | 5-66-5042-00 | 1 | 1 | 1 | |
| 12 | No. 4 coil kit 60 Hz | 115/230 Vac | 5-96-6407-05 | 1 | | |
| | | 230/460 Vac | 5-96-6409-05 | 1 | | |
| | | 115 Vac | 5-96-6401-05 | 1 | | |
| | | 230 Vac | 5-96-6402-05 | 1 | | |
| | | 460 Vac | 5-96-6404-05 | 1 | | |
| | | 575 Vac | 5-96-6405-05 | 1 | | |
| | No. K4 coil kit 60 Hz | 115/230 Vac | 5-96-6457-05 | | 1 | |
| | | 230/460 Vac | 5-96-6459-05 | | 1 | |
| | | 115 Vac | 5-96-6451-05 | | 1 | |
| | | 230 Vac | 5-96-6452-05 | | 1 | |
| | | 460 Vac | 5-96-6454-05 | | 1 | |
| | | 575 Vac | 5-96-6455-05 | | 1 | |
| | No. K4+ coil kit 60 Hz | 115/230 Vac | 5-96-6407-25 | | | 1 |
| | | 230/460 Vac | 5-96-6409-25 | | | 1 |
| | | 115 Vac | 5-96-6401-25 | | | 1 |
| | | 230 Vac | 5-96-6402-25 | | | 1 |
| | | 460 Vac | 5-96-6404-25 | | | 1 |
| | | 575 Vac | 5-96-6405-25 | | | 1 |

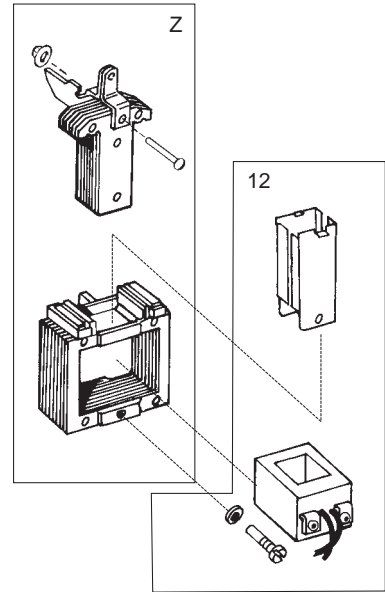


TABLE 3
Contents of Kits and Assemblies

| Item Designation | Kit Description |
|------------------|--|
| 3 | Stationary disc kit (5-66-8354-00) 1 - Stationary disc |
| 3A | Stationary disc kit (5-66-8355-00) 2 - Stationary discs with springs |
| 4 | Friction disc kit (5-66-8458-00) 1 - Friction disc |
| Z | No. 4 solenoid kit (5-66-5042-00) 1 - Plunger 1 - Solenoid link 1 - Frame 1 - Solenoid link cap screw 1 - Solenoid link nut 3 - Solenoid mounting screws |
| 12 | No. 4 AC coil kit (5-96-64XX-X5) Coil Plunger guides Wire nut |
| not shown | Vertical spring kit (5-64-5039-00) 6 - Copper springs 1 - Insertion tool |
| 2G | NEMA 4 Gasket kit (5-63-0540-00) 1 - Housing to endplate gasket 1 - Endplate to motor gasket |
| | NEMA 2 Gasket kit (5-63-0541-00) 1 - Endplate to motor gasket |



Rexnord Industries, LLC
Stearns Division
5150 S. International Dr.
Cudahy, WI 53110
(414) 272-1100 Fax: (414) 277-4364

www.stearns.rexnord.com