

Parts List for 77,000 Series Brakes

(Style EXG and EXGF 70 Series)

Information required when ordering replacement parts:

- Give part number of parts or kits needed, brake model number, and brake serial number. The brake model and serial number may identify special brakes not covered by this parts list.
- When ordering housing and endplate assembly, specify lead wire location and connection.
- When ordering hubs, specify shaft diameter (bore) and keyway.

For installation and service instructions, see P/N 8-078-920-00. Detailed service instruction sheet is included with each kit.

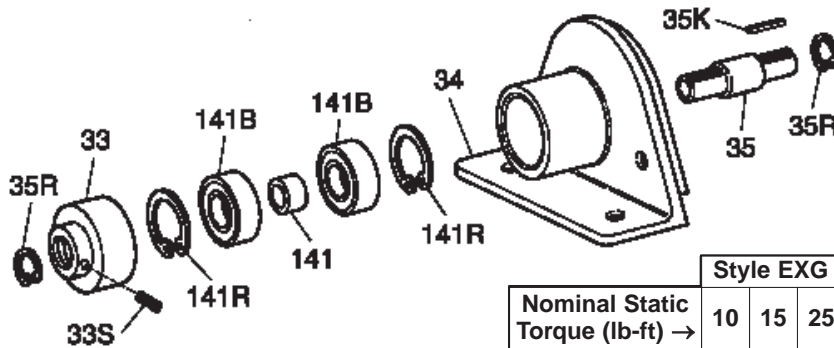
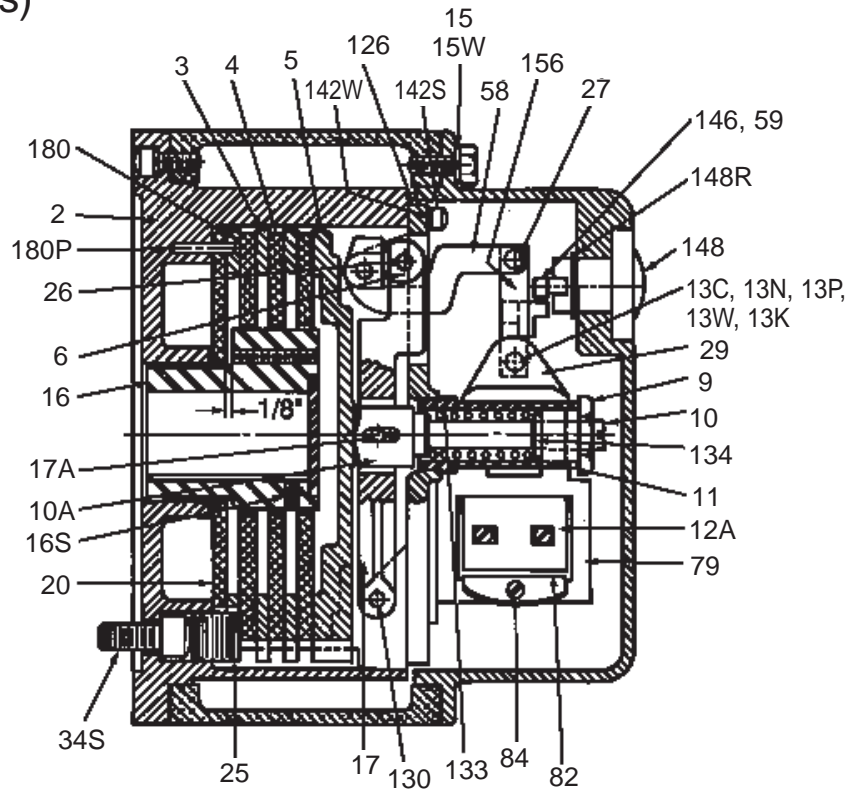
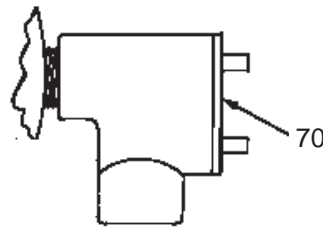


TABLE 1
Components of Standard AC Brakes

Item or Kit No.	Description	Part Number ↓	Style EXG (Motor Mounted)						Style EXGF (Foot Mounted)							
			10	15	25	35	50	75	105	10	15	25	35	50	75	105
2	Housing, heat jacket and endplate assy. Housing, heat jacket and endplate assy. Housing, heat jacket and endplate assy. Housing, heat jacket and endplate assy. (does not include – 3, 4, 5, 16, 34S, 142, 142S and 142W)	consult factory consult factory consult factory consult factory	1	1	1	1	1	1	1	1	1	1	1	1	1	1
3	Stationary disc kit	5-66-8372-00				1	1	2	2				1	1	2	2
4	Friction disc	8-004-702-00	1	1	1	2	2	3	3	1	1	1	2	2	3	3
5	Pressure plate	8-005-701-01	1	1	1	1	1	1	1	1	1	1	1	1	1	1
15	Cap screw, hex head 5/16 - 18 x 1"	9-16-3116-00	4	4	4	4	4	4	4	4	4	4	4	4	4	4
15W	Washer, spring H.C. 5/16"	9-45-0331-00	4	4	4	4	4	4	4	4	4	4	4	4	4	4
16	Hub with set screw (1-disc brake) Hub with set screw (2-disc brake) Hub with set screw (3-disc brake)	5-16-7004-00 5-16-7005-00 5-16-7006-00	1	1	1					1	1	1				

			Style EXG (Motor Mounted)							Style EXGF (Foot Mounted)													
			Nominal Static Torque (lb-ft) →																				
			10	15	25	35	50	75	105	10	15	25	35	50	75	105							
			Size →																				
			Brake Model Number →																				
Item or Kit No.	Description	Part Number ↓	1-077-011-00	1-077-021-00	1-077-031-00	1-077-041-00	1-077-051-00	1-077-071-00	1-077-081-00	1-077-012-00	1-077-022-00	1-077-032-00	1-077-042-00	1-077-052-00	1-077-072-00	1-077-082-00							
20	Heat barrier	8-020-701-00	1	1	1	1	1	1	1	1	1	1	1	1	1	1							
25	Set screw, special	8-025-701-00	4	4	4	4	4	4	4	4	4	4	4	4	4	4							
33	Collar, floor stand	8-033-701-01								1	1	1	1	1	1	1							
33S	Set screw 1/4 - 20 x 3/8" cup point	9-22-1006-00								2	2	2	2	2	2	2							
34	Floor stand bracket	8-034-702-01								1	1	1	1	1	1	1							
34S	Cap screw, socket head 1/2 - 13 x 1-1/4"	9-17-1420-00								4	4	4	4	4	4	4							
35	Brake shaft 1-1/2" diameter	8-035-703-00								1	1	1											
	Brake shaft 1-1/2" diameter	8-035-704-00											1	1									
	Brake shaft 1-1/2" diameter	8-035-705-00													1	1							
35R	Retaining ring Truarc 5108-137	9-03-0002-00								2	2	2	2	2	2	2							
35K	Key 1/4 x 1/4 x 1-11/16"	9-50-1027-00								1	1	1											
	Key 1/4 x 1/4 x 2"	9-50-1032-00											1	1									
	Key 1/4 x 1/4 x 2-9/16"	9-50-1041-00													1	1							
59	Release spring	8-059-701-00	1	1	1	1	1	1	1	1	1	1	1	1	1	1							
70	Conduit box and cover	5-08-0024-00	1	1	1	1	1	1	1	1	1	1	1	1	1	1							
141	Bearing spacer	8-141-701-00								1	1	1	1	1	1	1							
141B	Ball bearing	9-01-6706-00								2	2	2	2	2	2	2							
141R	Retaining ring Truarc 5008-300	9-03-0003-00								2	2	2	2	2	2	2							
142	Support plate assembly (see Table 2)	5-42-7041-00	1							1													
	Support plate assembly (see Table 2)	5-42-7043-00		1							1												
	Support plate assembly (see Table 2)	5-42-7045-00			1		1	1				1		1	1								
	Support plate assembly (see Table 2)	5-42-7047-00				1							1										
	Support plate assembly (see Table 2)	5-42-7049-00							1							1							
142S	Machine screw filister hd. 1/4 - 20 x 7/8"	9-12-3014-00	3	3	3	3	3	3	3	3	3	3	3	3	3	3							
142W	Lock washer, spring 1/4" hi collar	9-45-1330-00	3	3	3	3	3	3	3	3	3	3	3	3	3	3							
146	Release arm	8-146-701-01	1	1	1	1	1	1	1	1	1	1	1	1	1	1							
146S	Machine screw round head 8 - 32 x 5/8"	9-10-2710-00	1	1	1	1	1	1	1	1	1	1	1	1	1	1							
146W	Lock washer star internal - external #8	9-45-0627-00	1	1	1	1	1	1	1	1	1	1	1	1	1	1							
148	Release knob	8-148-701-01	1	1	1	1	1	1	1	1	1	1	1	1	1	1							
148R	Retaining ring Truarc 5108-100-ZD	9-03-0001-00	1	1	1	1	1	1	1	1	1	1	1	1	1	1							
180	Insulator disc	8-003-703-01	1	1	1	1	1	1	1	1	1	1	1	1	1	1							
180P	Spirol pin flared head 3/16 diameter x 1"	9-32-2004-00	3	3	3	3	3	3	3	3	3	3	3	3	3	3							
Vertical Above Modification										<i>not available</i>													
2A	Housing, heat jacket and endplate assy.	<i>consult factory</i>	1	1	1																		
	Housing, heat jacket and endplate assy.	<i>consult factory</i>				1	1																
	Housing, heat jacket and endplate assy.	<i>consult factory</i>						1															
	Housing, heat jacket and endplate assy. (includes Items 2 and 61A)	<i>consult factory</i>							1														
3V	Stationary disc kit	5-66-8372-00				1	1	2	2														
180A	Insulator disc	8-003-703-02	1	1	1	1	1	1	1														
5A	Pressure plate	8-005-701-02	1	1	1	1	1	1	1														
61A	Vertical mounting pin kit	5-66-3372-00	1	1	1																		
	Vertical mounting pin kit	5-66-3373-00				1	1																
	Vertical mounting pin	8-061-714-00						3	3														
62A	Vertical mounting spring kit (white)	5-66-3171-00	1	1	1	1	1	1	1														
Vertical Below Modification																							
2B	Housing, heat jacket and endplate assy.	<i>consult factory</i>				1	1																
	Housing, heat jacket and endplate assy.	<i>consult factory</i>						1															
	Housing, heat jacket and endplate assy.	<i>consult factory</i>							1														
3V	Stationary disc kit	5-66-8372-00				1	1	2	2														
180A	Insulator disc	8-003-703-02				1	1	1	1														
5B	Pressure plate	8-005-701-03				1	1	1	1														
61B	Vertical mounting pin	8-061-715-00				3	3																
61C	Vertical mounting pin	8-061-716-00						3	3														
62B	Vertical below spring kit (green)	5-66-3172-00				1	1	1	1														
	Vertical below spring kit (red)	5-66-3173-00						1	1														

TABLE 2
Components of Support Plate Assemblies

			Torque (lb-ft)	10	15	25 50 75	35	105
			Assembly Part Number →	5-42-7041-00	5-42-7043-00	5-42-7045-00	5-42-7047-00	5-42-7049-00
Item No.	Description	Part Number ↓						
6	Ball bearing	9-01-6801-00	1	1	1	1	1	1
9	Torque adjustment screw	8-009-701-00	1	1	1			1
	Torque adjustment screw	8-009-802-00					1	
10	Wear adjustment stud #5 and #6 solenoid	8-010-701-00	1	1	1	1	1	
	Wear adjustment stud #8 solenoid	8-010-702-00						1
10A	Wear adjustment nut	8-110-701-00	1	1	1	1	1	1
11	Pressure spring	9-70-2503-00	1					
	Pressure spring	9-70-2703-00			1	1		
	Pressure spring	9-70-2602-00		1				
	Pressure spring	9-70-2702-00						1
12	#5 AC solenoid assembly	5-12-5525-00	1					
	#6 AC solenoid assembly	5-12-5526-00		1	1	1		
	#8 AC solenoid assembly	5-12-5527-00						1
13C	Cap screw special	8-157-701-00	1					
	Cap screw special	8-157-702-00		1	1	1		
13P	Straight pin	9-29-5232-02						1
13N	Elastic stop nut 1/4 - 20	9-40-3730-00	1	1	1	1		
13W	Washer, flat brass	9-45-0172-00						1
13K	Cotter pin 3/32 x 1 stainless steel	9-31-4316-00						2
17	Lever arm - #5 and #6 solenoid	8-017-701-01	1	1	1	1		
	Lever arm - #8 solenoid	8-017-701-02						1
17A	Wear adjustment cap screw	8-036-702-00	1	1	1	1	1	1
17B	(Cap screw) kep 1/4 - 20	9-40-2830-00	1	1	1	1	1	1
26	Bearing pin	9-29-5022-00	1	1	1	1	1	1
27	Wear indicator pin	8-027-701-00	1	1	1	1	1	
	Wear indicator pin	8-027-801-00						1
58	Solenoid lever	8-008-701-01	1	1	1	1		
	Solenoid lever	8-008-702-01						1
64	Cotter pin 3/32 x 1/2 stainless steel	9-31-4308-00	1	1	1	1	1	1
126	Support plate	8-126-701-04	1	1	1	1	1	1
130	Lever arm pivot pin	9-29-5036-00	1	1	1	1	1	1
131	Indicator pivot pin	9-29-5041-00	1	1	1	1	1	1
133	Spring tube	8-133-701-00	1	1	1	1		
	Spring tube	8-133-702-00						1
134	Pressure spring washer	9-04-0902-00	2	2	2	1		2
138	Bearing - washer type	8-138-101-00	4	4	4	4	4	4
156	Release bar - link #5 and #6 solenoid	8-156-701-01	1	1	1	1		
	Release bar - link #8 solenoid	8-156-702-01						1

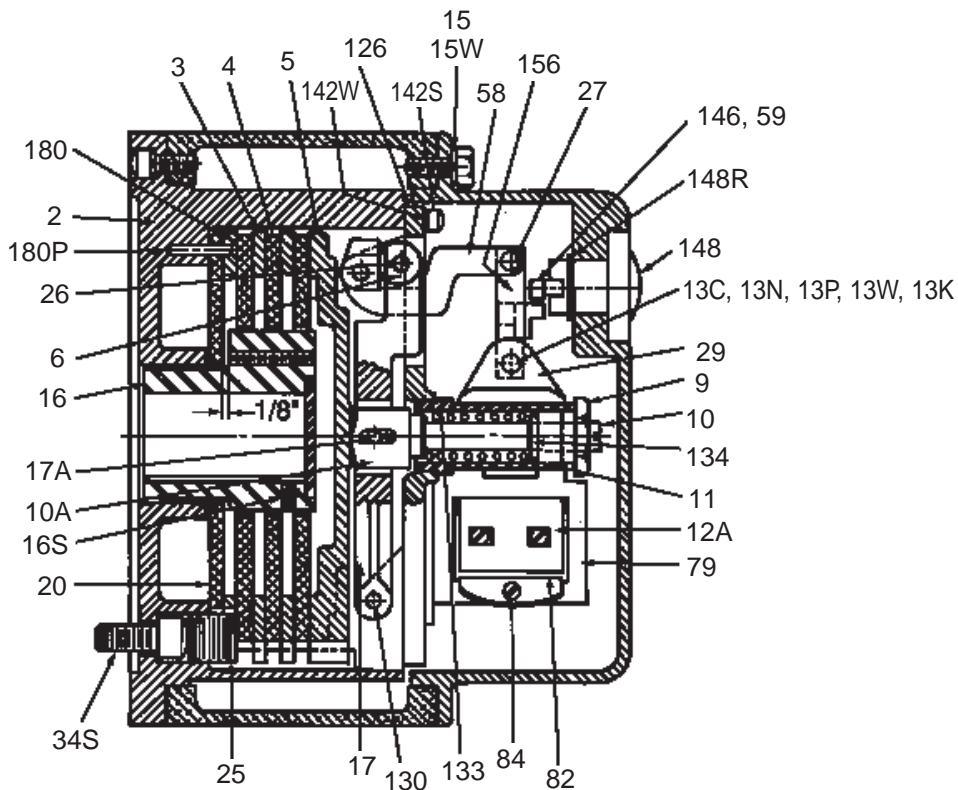


TABLE 3 - Coil Assemblies

Item	Description	Part Number	Torque (lb-ft)			
			10	15 25 35 50 75	105	
12A	No. 5 Coil Assembly 60 Hz	115 Vac	5-96-6501-05	1		
		230 Vac	5-96-6502-05	1		
		460 Vac	5-96-6504-05	1		
		575 Vac	5-96-6505-05	1		
		115/230 Vac	5-96-6507-05	1		
	230/460 Vac	5-96-6509-05	1			
	No. 6 Coil Assembly 60 Hz	115 Vac	5-96-6601-05		1	
		230 Vac	5-96-6602-05		1	
		460 Vac	5-96-6604-05		1	
575 Vac		5-96-6605-05		1		
No. 8 Coil Assembly 60 Hz	115 Vac	5-96-6801-05			1	
	230 Vac	5-96-6802-05			1	
	460 Vac	5-96-6804-05			1	
	575 Vac	5-96-6805-05			1	
	115/230 Vac	5-96-6807-05			1	
230/460 Vac	5-96-6809-05			1		

Above coils are UL Listed as Class A, however, they contain Class H insulation.

TABLE 4 - Contents of Kits and Assemblies

Number Designation	Kit Description
3	Stationary disc kit (5-66-8372-00) 1 - Stationary disc
12	Solenoid assembly (5-12-552X-00) 1 - Plunger 1 - Frame 3 - Solenoid mounting screws 3 - Solenoid mounting lock washers
12A	Coil assembly (5-96-6XXX-05) 1 - Coil 2 - Lead wire and terminal assemblies 2 - Terminal screws 2 - Terminal lock washers 2 - Plunger guides 2 - Plunger guide screws
61A	Vertical above mounting pin kit (5-66-337X-00) 3 - Vertical above mounting pins
62A	Vertical above spring and spacer kit (5-66-3171-00) 9 - Vertical above mounting springs 9 - Vertical above spring spacers
62B	Vertical below spring kit - green (5-66-3172-00) 3 - Vertical below springs - green
	Vertical below spring kit - red (5-66-3173-00) 3 - Vertical below springs - red