

# CRS Clutch-Roto Sprocket® Unit

[BACK TO TABLE OF CONTENTS](#)  
[BACK TO CLUTCH OVERVIEW](#)

- CSA certified.
- Ball bearing-mounted adapter hub and magnet body for long, trouble-free life.
- Pre-aligned, one-piece package can be mounted almost anywhere: line shaft, motor shaft, or stub shaft.
- Mounts in any position without special modifications.
- Spring release for positive disengagement.
- Non-asbestos friction linings provide smooth, shock-free operation.
- Zinc plated magnet body for corrosion resistance.
- Epoxy encapsulated coil construction for uniform heat transfer and moisture resistance.
- Class H magnet wire and potting material.
- Other sprocket configurations available, contact factory.

Refer to *Installation and Service Instructions Sht. 8-078-800-02* and *Parts List Sheets*:  
 8-078-802-01 (Size 3.5) 8-078-802-02 (Size 5)  
 8-078-802-03 (Size 5.5) 8-078-802-04 (Size 8)



**Standard  
DC Clutch**



**Tor-ac Clutch with  
built-in rectifier**

## Minimum Usable Plate Sprockets, Type A

Clutch Size	Roller Chain Number										No. of teeth
	35	40	41	50	60	80	100	120	140	180	
3.5	35	27	26	-	-	-	-	-	-	-	
5	35	27	27	22	19	-	-	-	-	-	
5.5	42	32	32	26	22	18	15	-	-	-	
8A Hub	40	28	28	23	20	-	-	-	-	-	
8B* Hub	54	40	40	32	28	21	18	15	14	11	

\*Maximum usable plate sprocket for Size 8A Hub.

**IMPORTANT NOTE:** Information and dimensioning relating to Tor-ac units shown in shaded area.

## Performance/List Price Data (Discount Symbol X-1)

Catalog Number	Size	Basic Model Number	Nominal Static Torque (lb-in)	Nominal Dynamic Torque at 1800 RPM (lb-in)	Max. RPM	Drive Hub Inertia (lb-ft²)	Thermal Capacity (ft-lb/min)①	Approx. Weight (lbs)	Maximum Electrical Power (watts)	Bore	List Price②
CRS-35	3.5	2-11-3162-00	100	65	5000	.00317	2750	4	11	3/8, 1/2, 5/8	\$2204.00
CRS-35T	3.5	2-11-3180-00	100	65	5000	.00317	2750	4	11	3/8, 1/2, 5/8	2208.00
CRS-50	5	2-11-4269-00	275	160	5000	.0164	4400	6	15	1/2, 5/8, 3/4, 7/8, 1	2468.00
CRS-50T	5	2-11-4280-00	275	160	5000	.0164	4400	6	15	1/2, 5/8, 3/4, 7/8, 1	2652.00
CRS-55	5.5	2-11-5525-00	720	400	3600	.0689	8250	12 <sup>3</sup> / <sub>4</sub>	26	3/4, 7/8, 1, 1 1/8, 1 1/4	3480.00
CRS-55T	5.5	2-11-5580-00	720	400	3600	.0689	8250	12 <sup>3</sup> / <sub>4</sub>	26	3/4, 7/8, 1, 1 1/8, 1 1/4	3664.00
CRS-80A	8A	2-11-8322-00	1740	1160	1800	.6640	16500	34	35	1 1/8, 1 1/4, 1 3/8, 1 1/2, 1 5/8, 1 3/4	6720.00
CRS-80B	8B	2-11-8323-00	1740	1160	1800	.6640	16500	34	35	1 1/8, 1 1/4, 1 3/8, 1 1/2, 1 5/8, 1 3/4	6720.00

① Thermal capacity rating is based on ambient temperature of 70°F at 1750 RPM. ② Sprocket available at additional cost. Consult factory. List prices subject to change without notice.

## Ordering Information

Example of a complete part number:

2-11-3162-00-L J —  
                                     └─ 90-100 Vdc  
                                     └─ 5/8 bore 3/16 x 3/32 keyway

**Bore and Keyway Table\***

Character	Bore/Shaft Dia. (in.)	Keyway (inches)
H	3/8	3/32 x 3/64
J	1/2	1/8 x 1/16
L	5/8	3/16 x 3/32
N	3/4	3/16 x 3/32
O	7/8	3/16 x 3/32
Q	1	1/4 x 1/8
R	1 1/8	1/4 x 1/8
T	1 1/4	1/4 x 1/8
U	1 3/8	5/16 x 5/32
V	1 1/2	3/8 x 3/16
X	1 5/8	3/8 x 3/16
Y	1 3/4	3/8 x 3/16

\*Special or metric bores available, consult factory.

**Voltage Table**

Character	Voltage
C	12 Vdc
E	24-28 Vdc
J	90-100 Vdc
N*	115 Vac*

\*Includes rectifier.  
Not available on size 8.

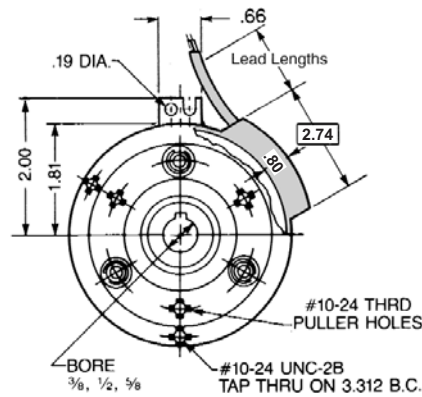
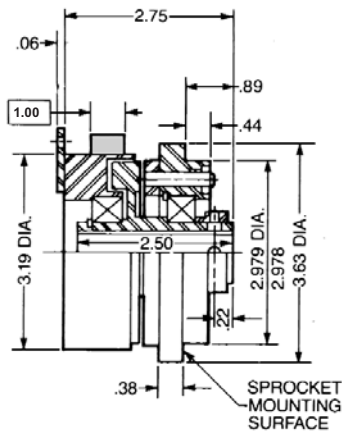
# CRS Clutch – Roto Sprocket® Unit (continued)

## Dimensional Data (In Inches)

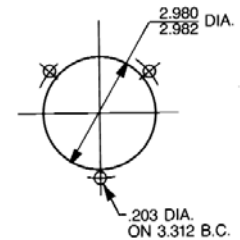
[BACK TO TABLE OF CONTENTS](#)

[BACK TO CLUTCH OVERVIEW](#)

### Size 3.5

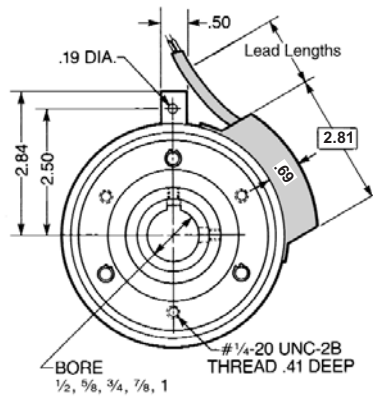
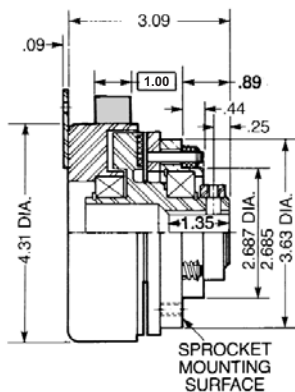


#### Sprocket Mounting Dimensions

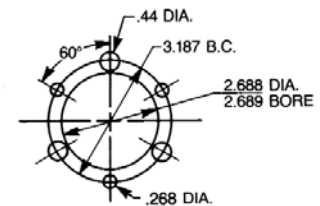


Lead Lengths: All Tor-ac units have 32" leads. Standard DC unit has 18" leads.

### Size 5

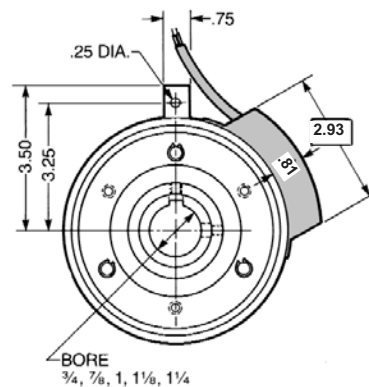
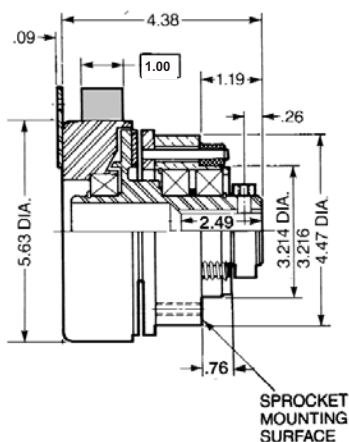


#### Sprocket Mounting Dimensions

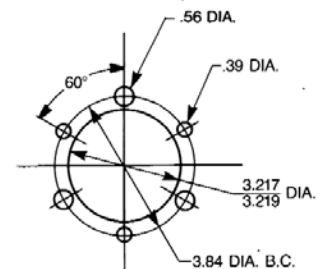


Lead Lengths: All Tor-ac units have 32" leads. Standard DC unit has 18" leads.

### Size 5.5



#### Sprocket Mounting Dimensions



Lead Lengths: All Tor-ac units have 32" leads. Standard DC unit has 24" leads.

Dimensions are for estimating only and subject to change without notice. For installation purposes, request certified prints.

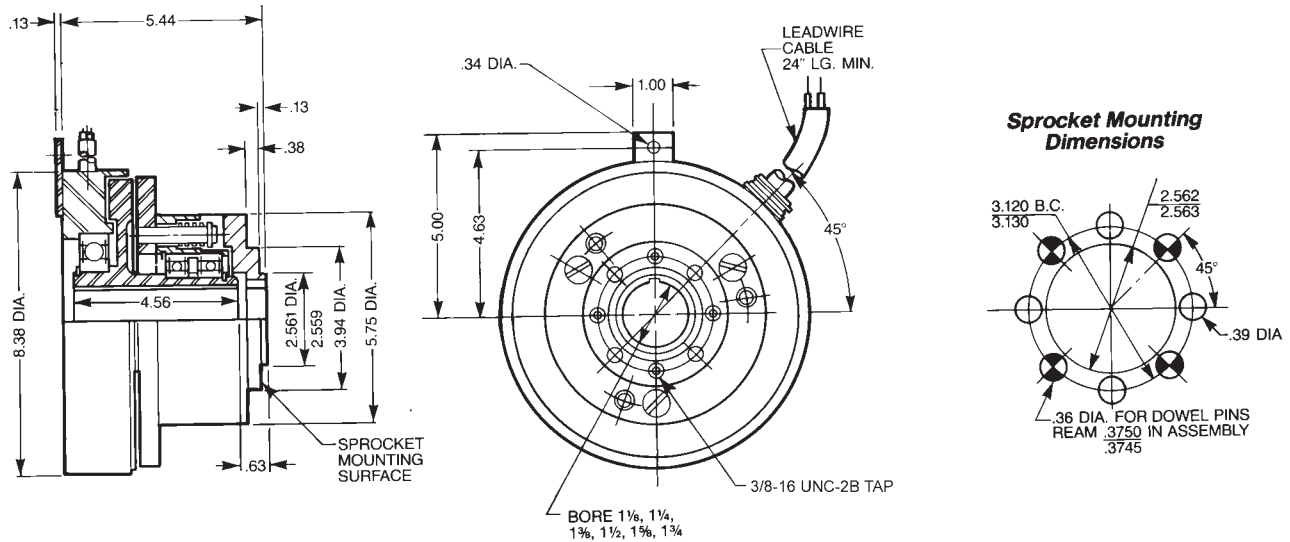
# CRS Clutch – Roto Sprocket® Unit (continued)

## Dimensional Data (In Inches)

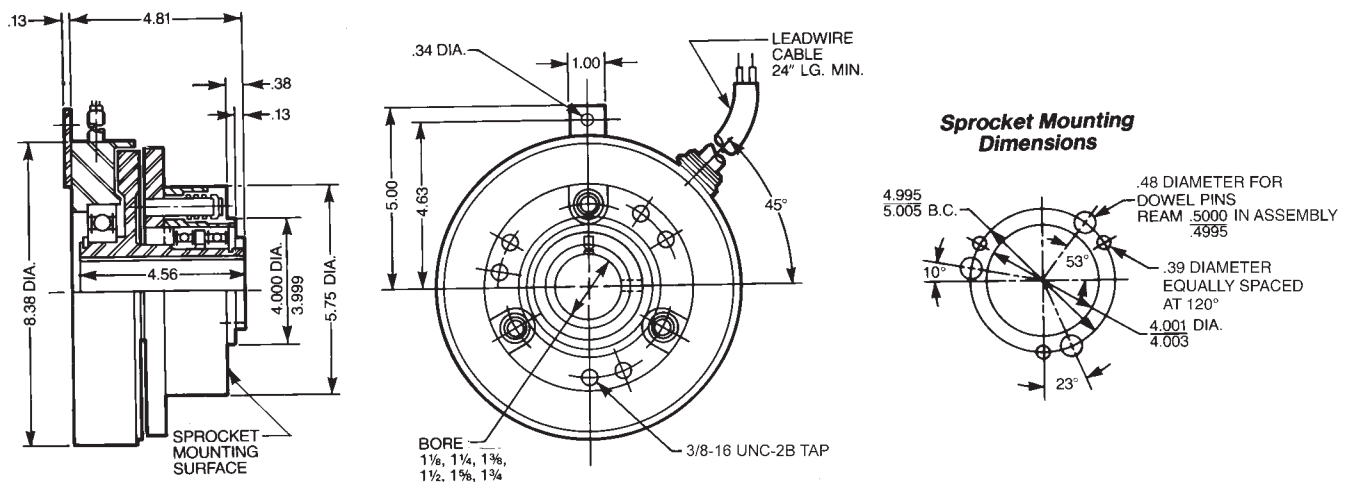
[BACK TO TABLE OF CONTENTS](#)

[BACK TO CLUTCH OVERVIEW](#)

### Size 8A



### Size 8B



Dimensions are for estimating only and subject to change without notice. For installation purposes, request certified prints.